

Keltie's Guide to London Bridge

INTA 2026

Keltie provides this guide to the London Bridge area for those attending the INTA Annual Meeting 2026. Our London office is conveniently located in the heart of this vibrant district, making it the perfect starting point to explore the neighbourhood. Members of our trade mark team share their personal recommendations on what to do and see while you're here. So, you too can experience London like a Londoner.

Landmarks of London Bridge:



The Shard

Western Europe's tallest building offers incredible panoramic views—visit The View from The Shard on level 72 for a 40-mile outlook across London.

Borough Market

World-renowned food market. Borough Market has been trading for over a millennium (especially lively Tuesday–Saturday).

HMS Belfast

A Second World War-era light cruiser permanently moored between London Bridge and Tower Bridge. It's open for tours.

Southwark Cathedral

A serene cathedral opposite the station, featuring beautiful stained-glass windows and frequent musical performances. It has been a place of worship for more than 1,000 years and retains the medieval Gothic structure. Look out for Hodge the Cathedral cat!

Golden Hinde

A full-size reconstruction of this Elizabethan galleon, the first English ship to circumnavigate the globe, is moored close to Borough Market.

Winchester Palace

Between Shakespeare's Globe and the Golden Hinde, look out for the ruins of Winchester Palace. Today only the shell is left following a fire in 1814, but this was once one of the grandest buildings in medieval London and the residence of the Bishops of Winchester.

Tower Bridge

One of London's most famous sights, Tower Bridge is about 10 minutes' walk from London Bridge station. You can walk across the high-level walkways which provide great views up and down the Thames and also have a glass floor so you can look down on the traffic below. The Bridge is raised about 800 times a year to allow ships to pass underneath.

The Clink Prison Museum

One of England's oldest jails, dating back to 1144, the Clink has become a byword for prison. The Museum is on its original site, and includes archaeological artefacts and stories of famous inmates. The Clink also has a surprising connection to the Mayflower Pilgrims who sailed to America in 1620.

The Old Operating Theatre Museum & Herb Garret

Learn about the history of medicine and surgery at Europe's oldest surviving operating theatre, which was installed in 1822. It is open to the public from Thursdays to Sundays.



INTA's recommended hotels in the area:



Novotel London Bridge



53-61 Southwark Bridge Rd, London SE1 9HH
7 minute walk from station



ibis London Blackfriars



49 Blackfriars Rd, London SE1 8NZ
10 minute walk from station



Mercure London Bridge



8-14 Talbot Square, Tyburnia, London W2 1TS
10 minute walk from station



Hilton London Bankside



2-8 Great Suffolk St, London SE1 0UG
15 minute walk from station



ibis Styles London Southwark



43-47 Southwark Bridge Rd, London SE1 9HH
3 minute walk from station



Leonardo Royal London Tower Bridge



45 Prescot St, London E1 8GP
15 minute walk from station

Our Recommendations



Partner **Charlotte Wilding** recommends:



London Bridge offers a rich blend of history, food, culture, and iconic views—all packed into one of London's most atmospheric neighbourhoods.

The bridge itself has been a crossing point over the River Thames since Roman times and the area has layers of history from medieval execution sites to Victorian marketplaces and WWII-era war stories.

London Bridge is also home to Borough Market, which is one of the oldest and most famous food markets in the UK. There are iconic attractions: The Shard, Southwark Cathedral, HMS Belfast, the Tate Modern, Shakespeare's Globe, to name a few. Whether you're into culture, cuisine, or just wandering with a view, London Bridge is an essential part of any London itinerary.

Hawksmoor Borough is one of my favourite restaurants in the area. It is set in a former hops/fruit warehouse just off Borough Market, a short stroll from London Bridge station and Keltie's office. It's an ideal recommendation whenever you want to impress!



Senior Associate **Tasneem Madani** recommends:

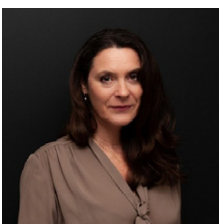


The best thing about London is walking around it.

If you have some free time between meetings, just saunter around the area and soak up the uniquely London atmosphere. Manuela and I are fans of **Monmouth Coffee** – grab a coffee and then set off on your expedition. People watch. Spot the workers, the tourists, the fashionistas—from the eccentrically dressed, to the habitually stressed, you'll find them all.

This is London. Be a Londoner for a day! Pass through Borough Market and head towards Southbank Boardwalk. Listen to the buskers, take note of the sculptures and soak up the ambience by the River Thames. Catch sight of the thatched roof of Shakespeare's Globe, and the contrastingly contemporary Tate Modern not long after. Why not pick up a second-hand book from the stalls along the way as a memento?

After your hard labours, I highly recommend grabbing a delicious pastry as you return to the Borough Market area. **Try Bread Ahead:** you won't be disappointed.



Partner **Rosemary Cardas** recommends:

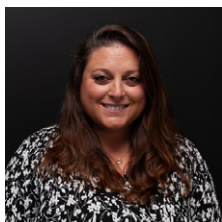


Enjoy breathtaking panoramic views over London and beyond...

...whilst enjoying lunch, dinner, afternoon tea or a traditional English Sunday Roast at **Aqua Shard** Restaurant nestled on the 31st floor of the Shard building next to London Bridge station and a five-minute walk from Keltie's office.

The Shard is the tallest building in the UK, standing over 300 metres (1,000 feet) high. It was designed by Italian architect Renzo Piano and was completed in 2012. There is a viewing gallery on the 72nd floor but you can also enjoy great views from Aqua Shard. Host your private event here or treat clients to a casual lunch, a formal dinner or cocktails at the bar whilst taking in the stunning views.

Our Recommendations



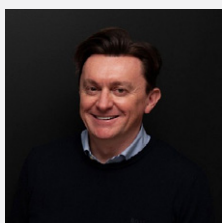
Partner **Eleni Mezulanik** recommends:



Wright Brothers provides high quality, fresh and delicious British seafood.

The founders of Wright Brothers have dedicated over 20 years to build a reputable brand. The business started with the wholesale of oysters which expanded to a variety of seafood and has continued to grow. In 2005, the first restaurant opened in vibrant Borough Market just a stone's throw from Keltie's office. The business has since launched two more restaurants and supplies over 500 establishments in the UK including some run by Michelin-starred chefs. Wright Brothers provides high quality, fresh and delicious British seafood. I would recommend booking early to avoid disappointment as seating is limited.

Another recommendation is the Ned which is located in the heart of the city and a short walk from London Bridge. The **Ned** is located in the former Midland Bank headquarters which is rich in history and is an impressive building. You will not be short of options as there are seven restaurants and three bars. My two favourite restaurants in The Ned are Lutyens Grill and Kaia, which is an Asian-Pacific inspired restaurant.



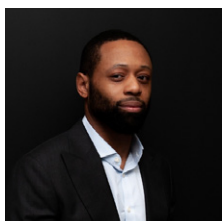
Partner **Alistair Gay** recommends:



For a traditional taste of Britain, try the Fish and Chips or classic Shepherd's Pie.

For casual business lunches or dinners, afternoon tea, or drinks with friends, visit **The Ivy Tower Bridge**. It has outdoor summer seating and fantastic views of the City – including Tower Bridge and the Tower of London. It is a short five-minute walk from our office and London Bridge station. The Ivy is known for great service and is reasonably priced. For a traditional taste of Britain, try the Fish and Chips or classic Shepherd's Pie.

If you have more time, see what is on at the Bridge Theatre which is just next door. One of London's newest theatres, it opened in 2017 and has staged plays and musicals with some of the country's leading actors. The Bridge Theatre has a flexible space, which can be configured differently for each production. It is also famous for its freshly baked madeleines, which are served during the interval.



Senior associate **Jason Aghatise** recommends:

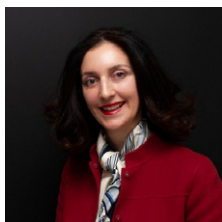


Experience a luxurious private Thames boat tour, gliding through London's heart in style.

Enjoy onboard refreshments and stunning views of iconic landmarks such as Tower Bridge, the London Eye and the Houses of Parliament from the water. Tours are conveniently located within a 15-minute walk from our Keltie London Bridge office. Don't forget your camera phone!

Thames Clippers, **Thames Luxury Charters** and **Salter Steamers** offer private Thames boat tours. This could be good if the weather is hot. Refreshments and drinks can be included. I haven't been but it's on my list! Customers can jump on at Tower Pier which is 12 minutes' walk from London Bridge.

Our Recommendations



Partner **Manuela Macchi's** perfect day in the London Bridge area:

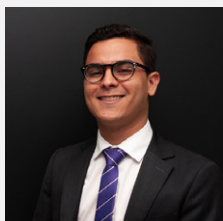


I would take a stroll along the Thames to Tate Modern.

My perfect day starts with coffee at artisanal coffee roasters **Monmouth Coffee Company**, which has been a popular spot in Borough Market since the 1990s and has helped to pioneer the coffee renaissance in London. After that, I would take a stroll along the Thames to Tate Modern, which opened in 2000. It is a very impressive building, with an extensive (and free) permanent collection and popular temporary exhibitions.

On the way to Tate Modern, I might pop into Shakespeare's Globe and see what's on. The outdoor venue, which is modelled on the theatre Shakespeare himself performed in, stages plays by Shakespeare (and other playwrights) throughout the summer. Performances go ahead, whatever the weather—so if you plan to stand in the yard make sure you take some rain protection.

I would then head back to Borough Market for some shopping at **A.P.C. Surplus**, a tucked-away outlet store of one of my favourite French fashion brands (address: 13 Park Street, London SE1 9AB) and, finally, **Café Murano** on Bermondsey Street for an Italian lunch-inspired restaurant.



Paralegal **Jesús Enrique Vargas Millan** recommends:



If you just want a moment to reset, head down to Potters Fields Park near Tower Bridge.

One of my favourite spots in the London Bridge area is **Padella**, famous for its fresh, handmade pasta. Yes, there's usually a queue, but it moves quickly, and it's worth it. The cacio e pepe is my favourite dish. It's cosy, no-fuss, and always hits the spot. I usually go mid-afternoon when it's quieter (and easier to get a table without a wait).

If you're after something with a bit of Latin soul, I always recommend **El Pastor** in Borough Market. Their tacos are proper Mexico City-style, and the place has great energy. I always go for the Al Pastor taco (pineapple, chilli, and all) and if you're into tequila or mezcal, you're in for a treat. It's perfect for a casual bite after a long day of networking.

And if you just want a moment to reset, head down to Potters Fields Park near Tower Bridge. It's only a short walk from our office, and the view of the river and the Tower of London is stunning. It's a great spot to take a breather or enjoy your lunch with a bit of sunshine (if you're lucky!).

Oh, and not to brag... but our office might just have the best views in London. Not that I'm biased or anything, but come see for yourself.



Partner **Ben Britter's** perfect day on Bermondsey Street:



For a local feel, I recommend a stroll down Bermondsey Street...

a buzzy stretch lined with independent cafés, stylish restaurants and boutique shops. It's also home to the **Fashion and Textile Museum** and White Cube contemporary art gallery, making it a perfect spot to spend an afternoon soaking up art, design and great food. Close by you will find the 'Bermondsey Beer Mile', a collection of microbreweries and taprooms nestled amongst the railway arches.



For more info about INTA please contact:

Email: INTALondon@keltie.com

Keltie LLP,
No. 1 London Bridge,
London,
SE1 9BA

www.keltie.com